

---

Bath & North East  
Somerset Council

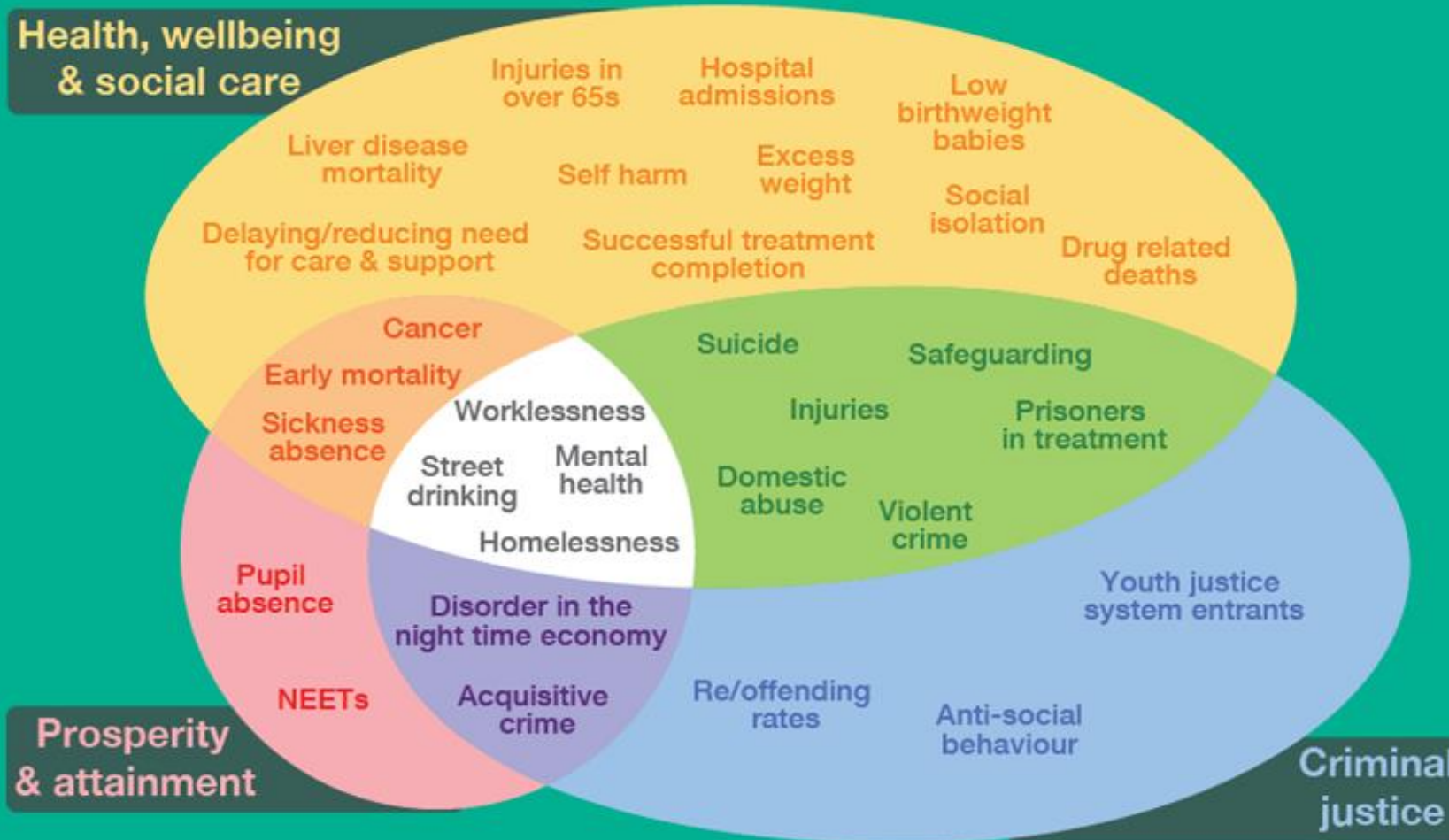
---

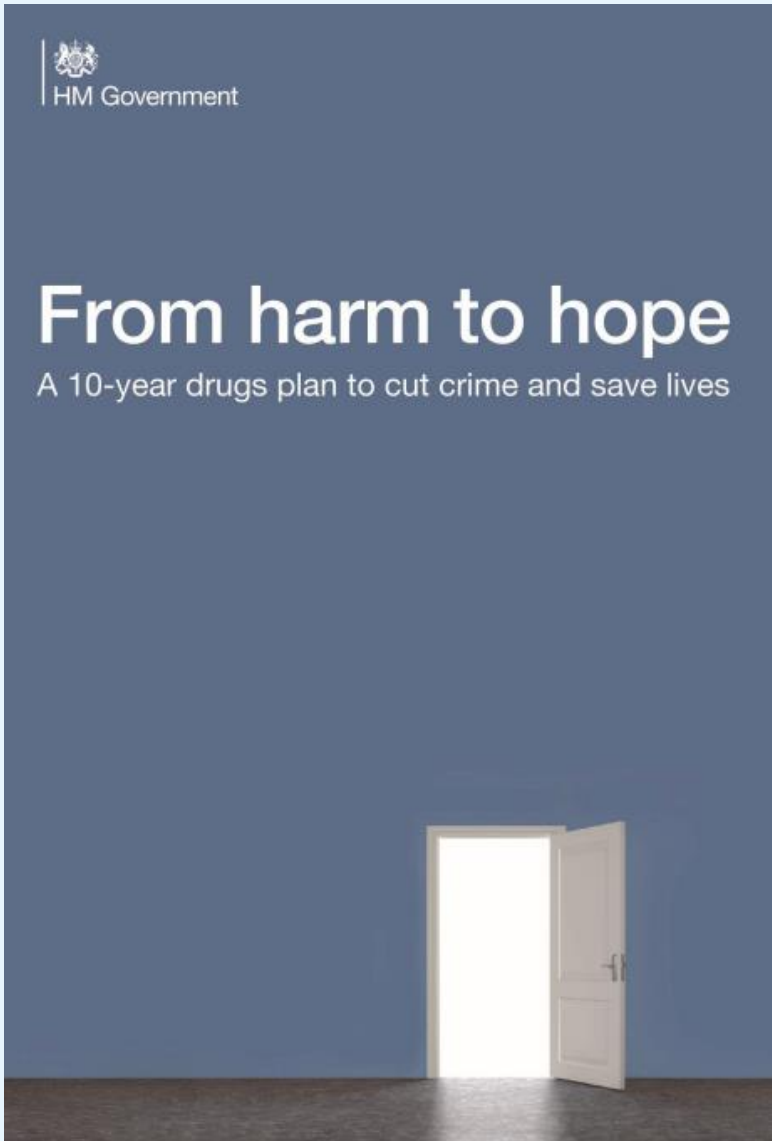
Improving People's Lives

# Drug and Alcohol Strategy 2022 - 2027

B&NES Council –Drug and Alcohol team, Public Health

# Alcohol and drug misuse impacts on a wide range of local priorities





Priority	 <b>Break drug supply chains</b>	 <b>Deliver a world-class treatment and recovery system</b>	 <b>Achieve a shift in the demand for recreational drugs</b>
----------	--	---	--

## Additional funding for local areas

- Supplemental Grant Funding
- Rough Sleeper Drug and Alcohol Treatment Grant (RSDATG)
- Inpatient detoxification funding via consortium

# Translating national strategy to local needs

- High levels of **drug and alcohol related hospital admissions**
- High levels of people not in treatment
- **Drug-related death rate** now above national average
- **Increasing complexity** (mental health and social needs)
- An **ageing treatment population** with increasing long term conditions
- **Children in need** assessments identify parental substance use disorder as a factor (21-23%)

• Services are seeing increasing complexity in adults in treatment, and more people with complex lives are affected by substance use:



7 in 10 adults reported a mental health treatment need

1 in 5 adults reported a housing issue



6,166

children and young people live in households with domestic abuse, a parent with a severe mental health problem or a parent with substance use



1,688

children live in a household with problematic parental substance use

# Development of the strategy

- B&NES Drug and Alcohol Partnership Group
- Consultations:
  - Online consultation for stakeholder networks
  - Focus groups with adult service users and front line workers
  - Online and paper feedback from young people with P28
  - Stakeholder events at Bath Council in July and September
  - Engagement events with housing, education, treatment services
  - Strategic forums
- Multi-agency collaborative work

# Listening to service users and stakeholders

Supporting  
people to  
recovery

Joined up  
services

Holistic care

Early  
intervention

Housing

Criminal  
Justice  
System

Mental  
health

Data  
sharing

Training for  
staff

Harm  
reduction

Education

Community  
and peers

## **Core Vision:**

To work together to enable people from B&NES to grow up and live free from the harms of substance use.

## **Core Aims:**

To focus on prevention alongside early intervention, and support those that experience difficulties with substance use by having an effective treatment and recovery support system.

# Priorities

1. **Reduce demand** for substances in the B&NES population
2. **Support more adults and young people to access and benefit from treatment and recovery services**
3. **Prevent and reduce harms** from drugs and alcohol, including **preventing drug and alcohol-related deaths**
4. **Support** the health and social needs of adults and young **people with complex lives**

## Next Steps...

- **Action planning** to deliver the strategy (*in process*)
- Implementation will be overseen by the Bath and North East Somerset Drug and Alcohol Partnership with supporting governance
- Outcomes for monitoring the strategy and action plan will be informed by national guidance (awaited 2022), with locally agreed indicators informed by the priorities and data discussed